

ISS and Barco

SecurOS Barco integration is expanded with CMS support

Barco, leading global supplier in collaborative visualization for control rooms and Intelligent Security Systems (ISS), a global leader in IP video surveillance, video analytics, facial recognition and license plate recognition unified in a single platform have a long-standing proven history of cooperation and software integration. Both parties have invested in a major update of the integration based on their latest software platforms to craft solutions to create greater flexibility and maximize value for the joint customer community: **More Options. No Learning Curve. Faster Response.**

ISS

ISS developed its software with the idea that the needs of security professionals globally are constantly adapting as threats emerge and needs are identified. With this in mind, ISS has developed solutions that go beyond and at the same time enhance traditional VMS systems. As pioneers in video management and video analytics, ISS built its open platform from inception with an eye to long range needs. **The SecurOS name fundamentally defines its objective - to be an encompassing platform** on which a complete security architecture may be built.



Barco

Barco provides flexible and mission-critical visualization software and hardware products consisting of high-quality displays, rear-projection and near-seamless LCD video walls, professional grade graphics controllers and a **Control Room Management suite (CMS)** – an advanced software for easy display wall management, efficient inter-control-center collaboration and fast decision making based on sharing the right visual information at the right time easily.

Solution overview

The Barco visualization layer can now be controlled in three ways: Barco CMS Sidebar, ISS SecurOS client, or a mix of both - supporting the most efficient management workflow in the customer's control center. Using the ISS SecurOS client, the operator in the control room can easily manage the Barco CMS-powered video wall. Through the SecurOS Barco control panel, the operator can select pre-configured CMS perspectives on the Barco video wall - a Perspective being a grouping of sources providing situational awareness through a common operational picture. Using the ISS SecurOS user interface, the operator can easily drag and drop any video source onto the active Perspective of the Barco overview display, as well as switch Perspectives on the fly. As such, the common operational picture on the video wall is easily tuned based on the current events, without any need for additional training. Installation and integration time is minimized through easy set-up and automated synchronization.

Advantages

- **Increased situational awareness** due to the integration of ISS SecurOS with Barco's CMS-powered video wall
- **Shorter reaction times** thanks to the drag-and-drop functionality allowing for quick display of any video sources into the video wall
- **Reduced training time** due to the integrated display management and visual collaboration (one integrated system) that the operators already use
- **Reduced installation time** thanks to the easy set up and synchronization between SecurOS and Barco CMS
- **Ultimate visual collaboration** by fully leveraging the CMS Perspective concept within the ISS SecurOS platform including launching and switching perspectives on the fly, as events require
- **Trusted integration** as Barco becomes a native feature of SecurOS based on this proven integration for 6 years

Barco CMS functionality within ISS SecurOS VMS

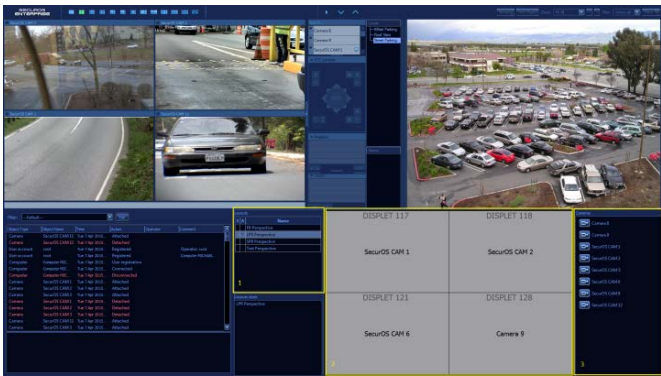


Fig 1
General Operator View. Video Wall Control, Camera View and Event Viewer

1. List of CMS Perspectives in SecurOS
2. Active CMS Perspective on the OverView wall
3. List of Sources from CMS

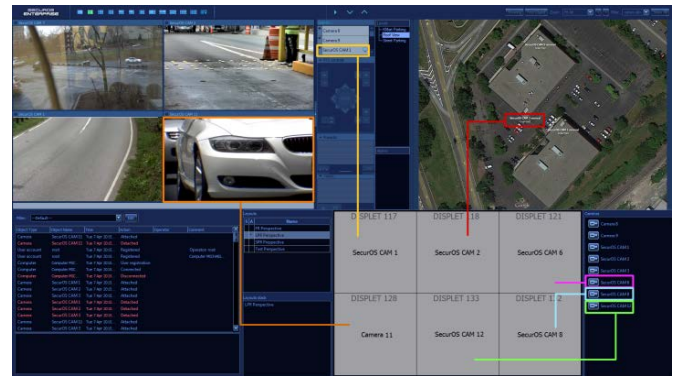


Fig 2
An Operator can drag-n-drop cameras from multiple areas on to the Monitor (which maps to a Barco Perspective) e.g. from the Media client, the Camera list of Media client, Map, or Source list of the Barco Monitor.

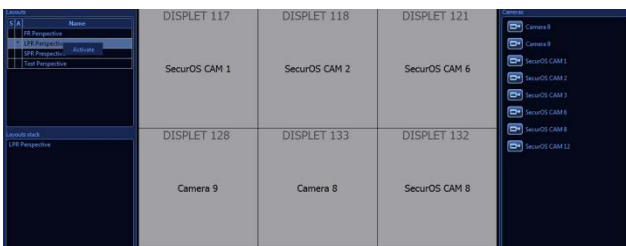
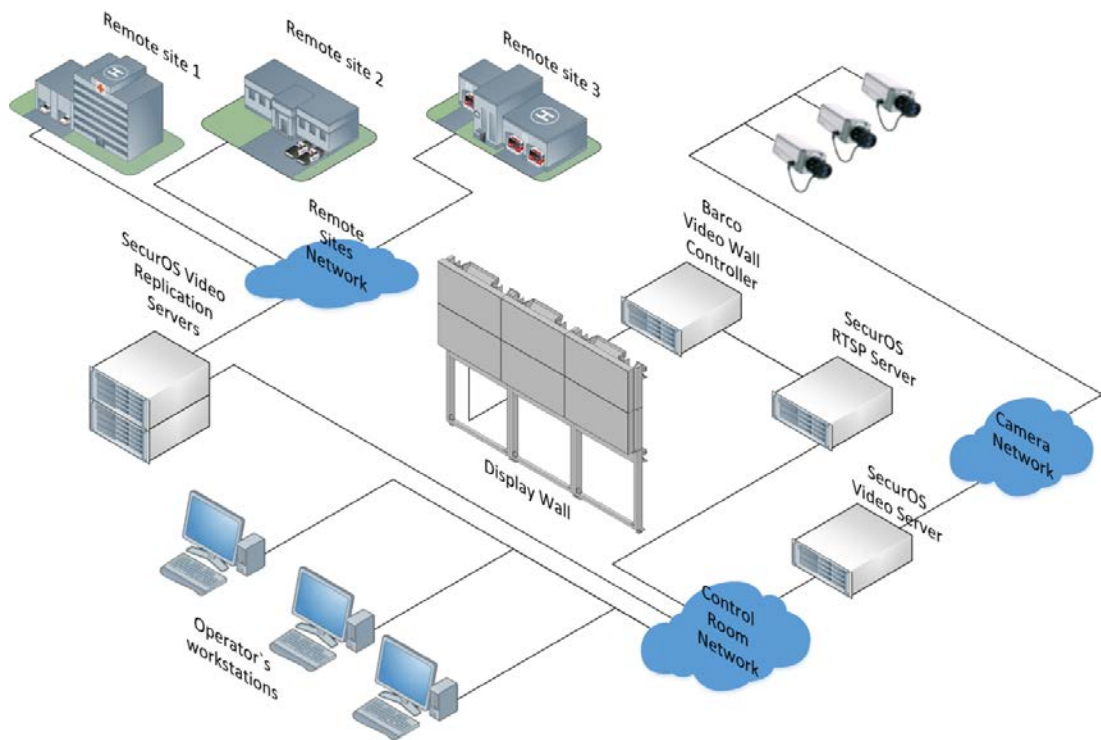


Fig 3
Using the SecurOS Client, the Barco OverView wall layout can be changed by right clicking on the list of Perspectives and activating.

Architecture



CMS powered Video Wall is a native part of ISS SecurOS Command and Control Solution. Local or Remote Video feeds go to ISS SecurOS VMS and are streamed to Barco via SecurOS RTSP server. An optional transcoding server can be added to the solution for devices that are not supported natively by the CMS system.

Solution requirements

Barco

- ISS SecurOS VMS
 - SecurOS Enterprise 8.6
 - RTSP Server Module
 - Barco Integration Module
- Barco TransForm N system (installed/licensed):
 - CMS version 2.6
 - For Barco customers currently using Apollo and/or Transform A, please contact Barco
- Please always contact Barco and ISS for needs analysis and documented quotations.

Request more information

- **Aluisio Figueiredo**, Chief Operating Officer, Intelligent Security Systems, aluisio@isscctv.com
- **Suchit Rout**, Director - Global Strategic Marketing, Barco, alliances@barco.com

About the Barco Strategic Alliances program

Great products need great focus. That is why Barco allies with other top players in their fields of expertise to build the best solutions available. By combining complementary strengths, we can optimize the integration of the systems and offer one single system

to the customer. This simplifies deployment, optimizes efficiency, minimizes reaction time, and reduces costs in a variety of selected professional markets. This creates a win/win situation for all parties involved, our customers in the first place.

More information? Please visit our dedicated webpage www.barco.com/alliances