

# G60 series

Laser phosphor venue projectors



# Sometimes all you need is a good

From simple to complex, there's a Barco projector for every project. The G60 series expands the single-chip offering with six new projectors between 7 and 10K. These have got you covered with great image quality to simply meet the needs of any installation and blend in perfectly in every environment.



## G60 series

### **From simple**

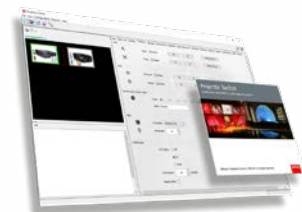
The G60 series brings uncompromised quality products at a very competitive pricing. It opens up the possibilities to a wider range of applications. Because sometimes all you need is just a good projector...

### **To complex**

... and even if that's not the case, the G60 models allow for a seamless integration in more complex installations. Their uniform compact size and interchangeable range of lenses provide optimal configuration options. On top of that, they're open for various input sources such as HDBaseT, HDMI, DVI and 3G-SDI.

### **User-friendly**

The series is supported by the Barco's Projector Toolset, our user-friendly software allowing for easy installation and maintenance.



# projector

## Leisure and culture:

Theme parks & attractions; museums & exhibitions

## ProAV:

Auditoriums & education; conference theatres

## Hospitality:

Business centres & boardrooms



## Maximum flexibility

From cultural settings, like museums, to a more business-like context, such as boardrooms: to fit perfectly in all types of environments, the G60 comes in both black and white.

## Great Barco service

The G60 projectors come with the valued Barco service and support that has proven its benefits in the past.

There's a professional manual and extensive installation guide available. And for additional questions, you can always reach out to our specialized helpdesk.

If you want to get the most out of your projector, Barco University offers professional product trainings and certification.

## G60-W7

7,000 lumens

1,920 x 1,200 resolution

1,200:1 contrast ratio

16:10 aspect ratio

## G60-W8

8,000 lumens

1,920 x 1,200 resolution

1,200:1 contrast ratio

16:10 aspect ratio

## G60-W10

10,000 lumens

1,920 x 1,200 resolution

1,200:1 contrast ratio

16:10 aspect ratio

## Talking lenses

The G60 series is compatible with following G-lenses:

- 0.36:1
- 0.75 - 0.95:1
- 0.95 - 1.22:1
- 1.22 - 1.52:1
- 1.52 - 2.92:1
- 2.90 - 5.50:1



*Use the UST G lens (0.36:1) for even more compact set-ups.*

## Reuse your lenses

If you already own a Barco PGWU projector, you can simply reuse the lenses on the G60 series. There's no need to invest in new lens gear.

Find the ideal lens for your projector setup in just a few clicks with our online lens calculator: [www.lenscalculator.barco.com](http://www.lenscalculator.barco.com)

## Your project. Our projection.

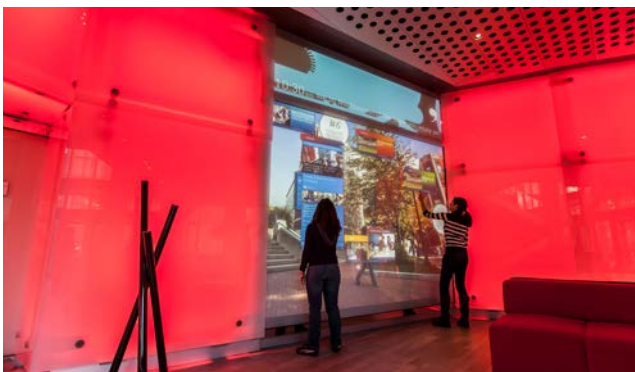
The G60 projectors are a perfect fit for fixed installation in a wide variety of venues and visitor attractions. They enable you to treat your audiences to compelling experiences that leave a lasting impression.



Museums



Theme parks



Visitor centers



Expositions

© 2019 Barco NV. All rights reserved. Reproduction in whole or in part without written permission is prohibited. All brand names and product names are trademarks, registered trademarks or tradenames of their respective holders. Due to continued innovation, information and technical specifications are subject to change without prior notice. Please check [www.barco.com](http://www.barco.com) for the latest specifications.

M00854-R00-0119-PB January 2019