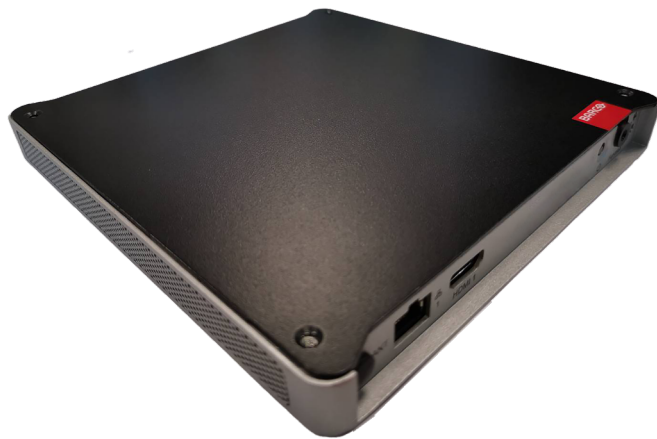


# WME-050

Next-generation large video wall management, made easier



- On premise installation
- Single access to Barco's Video wall Management Suite
- Secure and easy integration in existing IT networks
- Reliable enterprise platform, designed for 24/7 operation

The WME-050 helps you to easily set up, configure and maintain your video wall. It also enables a secure gateway to the Video wall Management Suite, which offers the possibility to manage a fleet of video walls from a centralized, remote location. This allows integrators and managed service providers to monitor all critical parameters of the video walls in a single dashboard. In this way, they can maximize the uptime of their customers, schedule maintenance before a failure occurs, ...

### **Maintaining, managing and monitoring remotely**

The challenge to easily maintain, manage and monitor devices, often distributed over a number of different buildings and locations is perfectly addressed by our Video wall Management Suite.

### **Be in control, everywhere, from anywhere**

With Barco's Video wall Management Suite, service providers are always in full control of all video walls in their fleet. There are a number of subscription models available, used to Monitor or Diagnose the video walls. Depending on your subscription model, you have different features available.

**PRODUCT SPECIFICATIONS****WME-050**

General specifications	
Operating system	Linux
Hardware configurations	Intel(R) Celeron 6305E CPU (Tiger Lake) 8 GB RAM 60 GB Industrial SSD
Connectivity	2x LAN 2x USB 3.0 (Type A) 2x USB 2.0 (Type A)
Power	DC: 19V, 3.42A
Power consumption	65W (max)
Heat dissipation	221 BTU/h
Noise level (@ 20°C -68°F)	Fanless design
Operating conditions	0°C -40°C, up to 80% humidity, non-condensing
Package content	<ul style="list-style-type: none"><li>■ 1x WME-050 controller</li><li>■ 2x Chassis mounting brackets</li><li>■ 4x Chassis feet</li><li>■ 4x Screws (M3x8)</li><li>■ 1x Infrared (IR) receiver</li><li>■ 1x Remote control</li><li>■ 1x External power supply</li><li>■ 1x Country-specific power cable (optional)</li><li>■ 1x Quick Start Guide</li><li>■ 1x Safety Manual</li></ul>
Accessories	19" rack mount (R985099) (optional)
Dimensions	
Dimensions (HxWxD)	19 x 180 x 190 mm
Dimensions (packaged)	90 x 310 x 230 mm
Weight	Appliance: 0.87 kg Power supply: 0.21 kg
Packaged weight	1.7 kg

Last updated: 08 Apr 2022

© 2018 Barco nv. All rights reserved. Reproduction in whole or in part without written permission is prohibited. All brand names and product names are trademarks, registered trademarks or tradenames of their respective holders. Due to continued innovation, information and technical specifications are subject to change without prior notice. Please check [www.barco.com](http://www.barco.com) for the latest specifications.