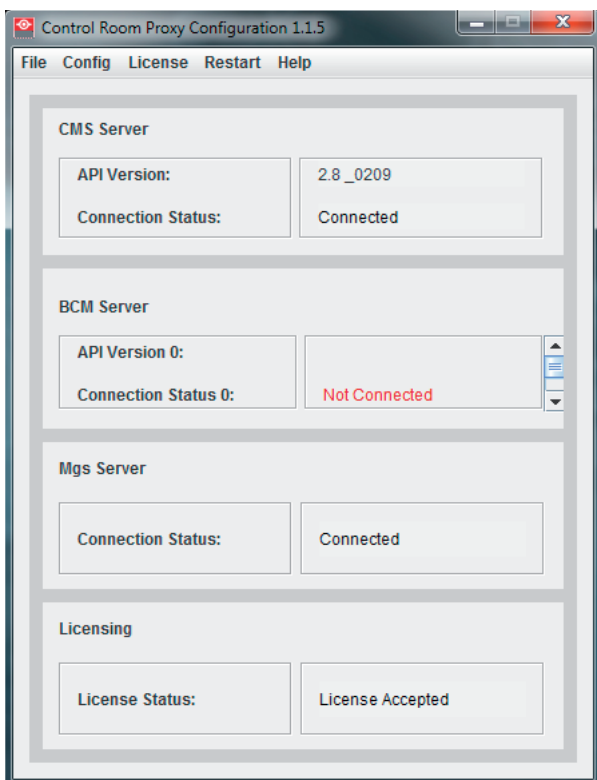


Control Room Proxy

Barco's CMS software is an advanced control room management suite that simplifies display wall management, makes collaboration efficient, and speeds up decision-making – in and beyond the control room. The CMS Add-ons extend the product's functionality, making the software even more powerful, flexible and easy to use.

Description



The Control Room Proxy is a light weight server application that provides a single programming interface to various Barco system components. It targets specifically touch panel integrations where a complex API needs to be avoided.

Through one simple TCP command line interface one can control the most common features on CMS and BCM (OL, OVL, NSL, OVD2, OVD, KVD).

This will allow changing perspectives and layouts on CMS displays and controlling the on/off state and input selections of the video walls or displays.

Through CRP, multiple walls (BCM servers) can be controlled at the same time.

CRP can be deployed as a Windows service or it can be installed on the Linux CMS server.

Benefits

- Simple to use programming interface
- One single gateway to various Barco system components
- Open for customization via Project Engineering

Deliverables

- CRP installer software (.exe or .deb)
- CRP Scheduler manual

Pre-requisites

- JAVA JRE required (same as other CMS clients)
- Win7 or Barco Linux (hosted by CMS server)

How to order

Contact your Barco sales representative.