

Proximex and Barco

Proximex PSIM incorporates Barco CMS visualization

Barco and Proximex, leading global suppliers in respectively visualization for control rooms and physical security information management (PSIM), have integrated their latest software platforms to maximize situational awareness and enhance decision making.

Proximex

Proximex provides a **physical security information management (PSIM)** software platform that integrates both existing and new systems into a centralized command and control center, so that incident information is brought together in context with security policies and operations for faster analysis and resolution.



Barco

Barco provides flexible and mission-critical visualization software and hardware products consisting of high-quality displays, rear-projection and near-seamless LCD video walls, graphics controllers and a **control room management suite (CMS)** – an advanced software for easy display wall management, efficient collaboration and fast decision making based on sharing the right visual information at the right time easily.

General Concept

The operator in the control room uses Proximex Surveillint as the centralized console for event management and situational awareness. The operator can easily select particular camera sources to be shown in a pre-defined area on the video wall. Moreover, Surveillint now has integrated extended capability to fully embrace the concept of perspectives in Barco's CMS environment. A perspective is a grouping of cameras and other sources providing situational awareness. Within the Surveillint central console, the operator can select from pre-programmed perspectives, to be loaded on Barco CMS-powered video walls or displays. Based on Rules and Business Logic, the sharing of perspectives can be triggered based on events. In addition Proximex has integrated the workflow to easily push the entire operator screen to other displays.

Benefits

- **Increased situational awareness** thanks to the Proximex Surveillint-managed common operational picture on the Barco CMS-powered video wall(s) and displays
- **Shorter reaction times** due to easy sharing of perspectives through the centralized console
- **Reduced training time** by leveraging integrated display management and visual collaboration

Barco CMS Functionality within Proximex Surveillint



Fig 1

Share a perspective or an operator screen on the Display from an Icon

- Send view to the Barco CMS powered video wall(s) or display(s) in predefined area, through a right-click command on that camera icon in Proximex Surveillint.
- Sharing of operator screen on the Barco CMS-powered video wall(s) or display(s) in a predefined area, through a right-click command.
- Display or hide Barco perspectives on Barco CMS-powered video wall(s) or display(s), through a right-click command on that display map icon in Proximex Surveillint.
- Manage which perspectives are available to share on different displays through Administrator access.

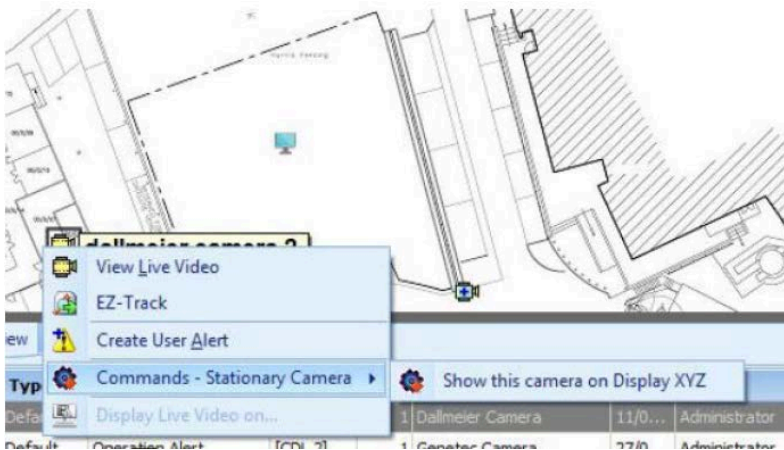


Fig 2

From Camera Icon selection, show the camera on predefined area on a Display

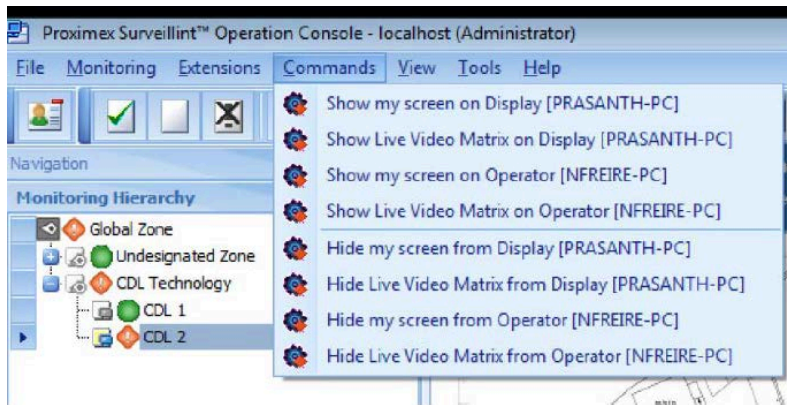


Fig. 3
From Administrator Access, manage access rights for sharing of perspectives on displays

Architecture

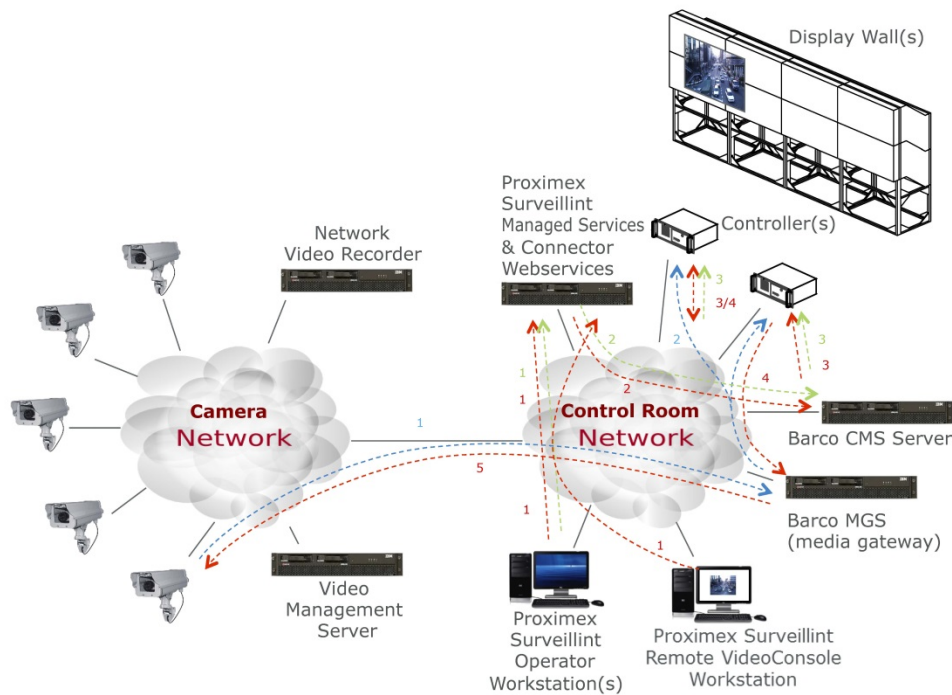


Fig 4
Source streaming

Source Control

Through camera selection in the Proximex Surveillint Operator Workstation, the Surveillint Managed Services server requests the IP camera to stream to the Barco controller and requests through the CMS server to execute local decoding on the Barco controller(s).

Display Management Control

Through selection of the perspective in the Proximex Surveillint Operator Workstation, the Surveillint Managed Services server requests the CMS server to load the requested perspective on the Barco wall.

Solution requirements

- Proximex Surveillint Version 6.1 or above, Barco Integration Module 1.0 More detailed requirements are described in the Barco CMS Integration Module document, available upon request
- Barco Transform N hardware
- Barco CMS 2.2
- For Barco customers currently using Apollo and/or Transform A, please contact Barco for the migration to CMS
- For Proximex customers currently using a lower version than Surveillint 6.1 , please contact Proximex
- IP Camera's and/or encoders to be supported by both Proximex and arco, please contact Barco and Proximex for their interoperability lists or forward plans
- Please always contact Barco and Proximex for needs analysis and documented quotations

Request more information

- **Hans Kahler**, Sr. Product Manager, Proximex, hans.kahler@proximex.com
- **Suchit Rout**, Director - Global Strategic Marketing, Barco, alliances@barco.com

About the Barco Strategic Alliances program

Great products need great focus. That is why Barco allies with other top players in their fields of expertise to build the best solutions available. By combining complementary strengths, we can optimize the integration of the systems and offer one single system

to the customer. This simplifies deployment, optimizes efficiency, minimizes reaction time, and reduces costs in a variety of selected professional markets. This creates a win/win situation for all parties involved, our customers in the first place.

More information? Please visit our dedicated webpage www.barco.com/alliances