

Genetec and Barco

Genetec Security Center incorporates Barco CMS visualization

Barco, leading global supplier in visualization for control rooms and Genetec inc., global leader in IP video surveillance, access control and license plate recognition unified in a single platform have a long-standing proven history of cooperation and software integration. Both parties have invested in a major update of the integration based on their latest software platforms to maximize value for the joint customer community: **View Better, Share Faster, Resolve Quicker.**

Genetec

Genetec™ Security Center is a unified security platform that seamlessly blends IP security systems within a single intuitive interface to simplify your operations. Security Center is a highly flexible platform to evolve with the customer, dependable without interruption, leveraging deep technology integration with partners. The Security Center platform consists of Omnicast Video Management, Synergis Access Control and AutoVu License Plate Recognition.



Barco

Barco provides flexible and missioncritical visualization products and software consisting of high-quality displays, rear-projection and nearseamless LCD video walls, graphic controllers and a **Control room Management suite (CMS)** - an advanced software for easy display wall management, efficient collaboration and fast decision making based on sharing the right visual information at the right time easily.

General Concept

The operator in the control room uses the Genetec Security Desk task-based client interface for easy management of the Barco CMS-powered video wall(s) or display(s). Through the Barco CMS task, the operator can select pre-configured CMS perspectives on the Barco video wall(s) – a perspective being a grouping of sources providing situational awareness. The operator can preview the particular perspective prior to launching it on the display wall, as well as edit the perspective on the fly. As such, the common operational picture on the video wall is easily tuned based on the current events, increasing situational awareness, without any need for additional training. Installation and integration time is minimized through easy set-up and automated database synchronization.

Benefits

- **Increased situational awareness** thanks to Genetec Security Center managed common operational picture on the Barco CMS-powered video wall(s) and displays
- **Shorter reaction times** thanks to easy sharing of perspectives through the Genetec Security Center platform
- **Reduced training time** thanks to integrated display management and visual collaboration
- **Reduced installation time** – thanks to easy set-up and continued database synchronization between the 2 platforms
- **Ultimate visual collaboration** by fully leveraging the perspective concept within the Genetec Security Center platform including previewing, launching and editing perspectives on the fly, as events require
- **Trusted integration** – a comfort level for the customer based on proven integration for almost a decade

Barco CMS Functionality within Genetec Security Center



Fig 1

The Genetec Security Center software (v 5.4) interfaces with the Barco CMS environment through a **Security Desk task called a Barco CMS task**.

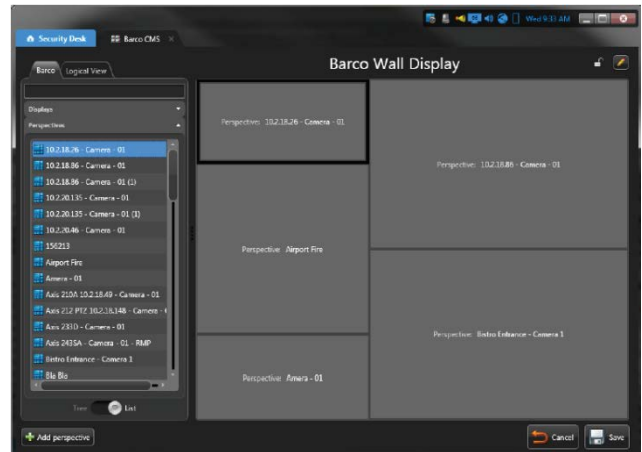


Fig 2

The Barco CMS task represents a dedicated “Barco workspace” and hosts the list of the CMS Displays (multiple Barco displays), Perspectives and Sources. These can be visualized in a logical or list/tree view, according to the preference of the user. Sources or perspectives can be dragged and dropped onto a selected display.

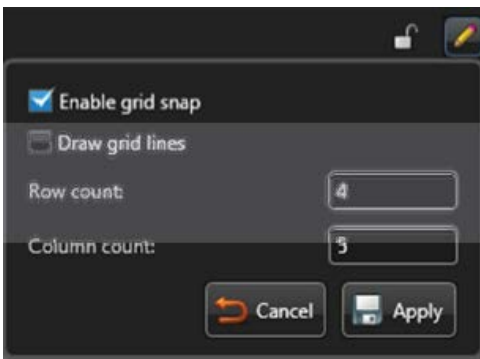


Fig 3

The CMS Task **allows to preview the grid positioning** of the sources and perspectives within the CMS Task.

In addition to camera sources, all other source types supported by CMS can be added to the perspective. This effectively integrates **3rd party information**, extending the viewing capabilities of the Security Center solution to screen-scraping, DVI encoding/decoding, and baseband inputs as supported in Barco's audio-visual environment.

A particular preconfigured CMS **perspective can be edited** on the fly, with respect to source deleting, adding or grid position adaptation. The newly made perspective can be saved under its original name or saved as a new but modified version. Saving perspectives happens automatically both in the Security Center and CMS server databases.

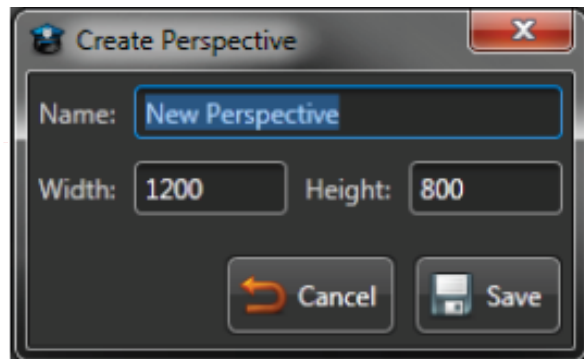


Fig 4

It is also possible to create **new perspectives from scratch**.

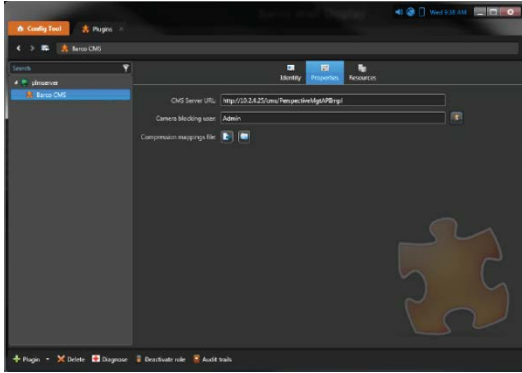


Fig 5

The Barco CMS Task within Genetec Security Center can operate in parallel with native CMS sidebar clients or other interfaces like touch panels. This allows **use case customization** best fit for the customers operations, based on the strength of both companies platforms.

Configuration

Connecting the CMS server to the Security Center system is through simple entering of CMS server URL.

Access rights to the Barco CMS task can be managed and the Genetec Security Center feature of **camera blocking** also applies to the CMS Task workspace environment.

Database synchronization between Security Center and CMS servers happens in the background, allowing system expansion (i.e. source additions) with **minimal integration effort**.

Any camera added in the Security Center environment, becomes visible in the CMS environment through automated database mapping in the background. Non-camera content needs to be configured in the CMS environment first. However, any content created in the CMS environment as source or perspective becomes available in the CMS Task of Security Desk.

Current and future camera interoperability is represented by a **customizable mapping file**. This file links Genetec specific cameras with Barco's CMS encoder templates.

Architecture

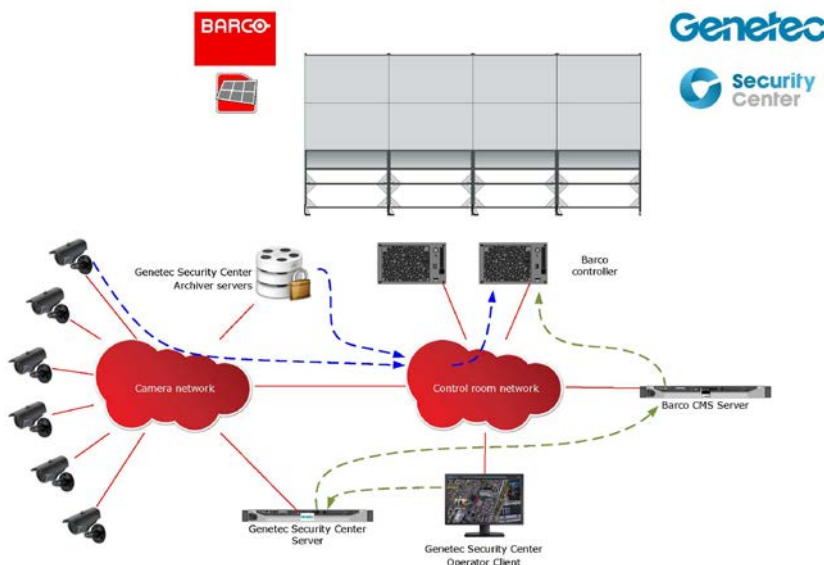


Fig 6

Source streaming

Multicast streaming is required. Multicast streams can come directly from the camera or the Genetec Security Center server depending on the camera and network capabilities.

Source Control

Through drag & drop functionality in the Security Desk client interface, the Security Center server requests through the CMS server to initiate streaming from the camera and decoding on the Barco controller(s).

Source Touring (Seamless)

Using the Touring API of Barco, sources can be seamlessly switched in a sequence.

Display Management Control

Through layout or perspective selection in the Security Desk client interface, the Security Center server requests the CMS server to load the requested layout or perspective on the Barco wall through the Barco controller.

Solution requirements

- Genetec Security Center 5.5 SR5 CU4
- Genetec provided Barco CMS Plug In (CMS Server)
- Barco Transform N hardware
- Barco CMS 3.1 with applicable licenses
- Barco Genetec - Alliance Integration License
- For Barco customers currently using Apollo and/or Transform A, please contact Barco for the migration to CMS
- For Genetec customers currently using Omnicast 4.x, please contact Genetec for the migration to Security Center and Barco CMS plugin
- IP cameras and/or encoders to be supported by both Genetec and Barco, please contact Barco and Genetec for their interoperability lists or forward plans
- Multicast network is required. For exceptional cases, contact Barco and Genetec
- Please always contact Barco and Genetec for needs analysis and documented quotations

Request more information

- **Louis-Rene Bergeron**- PLM for SDK Integrations, Genetec, lrbergeron@genetec.com
- **Tyler McDonald**- Strategic Alliances Manager, Barco, alliances@barco.com

About the Barco Strategic Alliances program

Great products need great focus. That is why Barco allies with other top players in their fields of expertise to build the best solutions available. By combining complementary strengths, we can optimize the integration of the systems and offer one single system

to the customer. This simplifies deployment, optimizes efficiency, minimizes reaction time, and reduces costs in a variety of selected professional markets. This creates a win/win situation for all parties involved, our customers in the first place.

More information? Please visit our dedicated webpage www.barco.com/alliances