

CNL and Barco

CNL IPSecurityCenter incorporates Barco CMS visualization

CNL has extended their PSIM platform with optimal integrated control room visualization from Barco specifically targeted for mixed analog and networked environments. Barco is a leading global supplier in control room visualization. CNL is a leader in physical security information management (PSIM) software.

CNL

CNL connects and manages disparate building and security technologies and aggregates intelligence from these systems, allowing organizations to react faster and more precisely to incidents. IPSecurityCenter provides a Common Operational Picture (COP) and following an alert, alarm or event presents step by step process guidance, ensuring complete compliance to security policies.



Barco

Barco provides flexible and mission-critical visualization software and hardware products consisting of high-quality displays, rear-projection and near-seamless LCD video walls, graphics controllers and a **control room management suite (CMS)** – an advanced software for easy display wall management, efficient collaboration and fast decision making based on sharing the right visual information at the right time easily.

General Concept

Within CNL's IPSecurityCenter application, the ability to manage camera and other content on the video wall is integrated. For any IP camera the operator can use the standard IPSecurityCenter software, running directly on the Barco controller for viewing on the video wall. For video wall viewing of legacy analog camera sources as well as TV and directly connected DVI sources, the operator can select any of these and "drop" them in a "drop zone" graphically representing the video wall perspective. In addition, IPSecurityCenter can adjust tiling dynamically. As such, the Operator has the ability to **manage the Common Operational Picture (COP)** on the Barco video wall from his desk. Operator training is minimized thanks to this integration of Barco CMS functionality within CNL's IPSecurityCenter. IPSecurityCenter is also fully integrated with Barco's Matrix Pro range of Matrix Switches to maximize the source input capabilities.

Benefits

- **Increased situational awareness** thanks to the CNL IPSecurityCenter managed common operational picture on the Barco CMS-powered video wall(s) and displays
- **Shorter reaction times** due to easy drag & drop of cameras into the video wall "drop zone"
- **Reduced training time** by leveraging integrated display management and visual collaboration

Barco CMS Functionality within CNL IPSecurityCenter

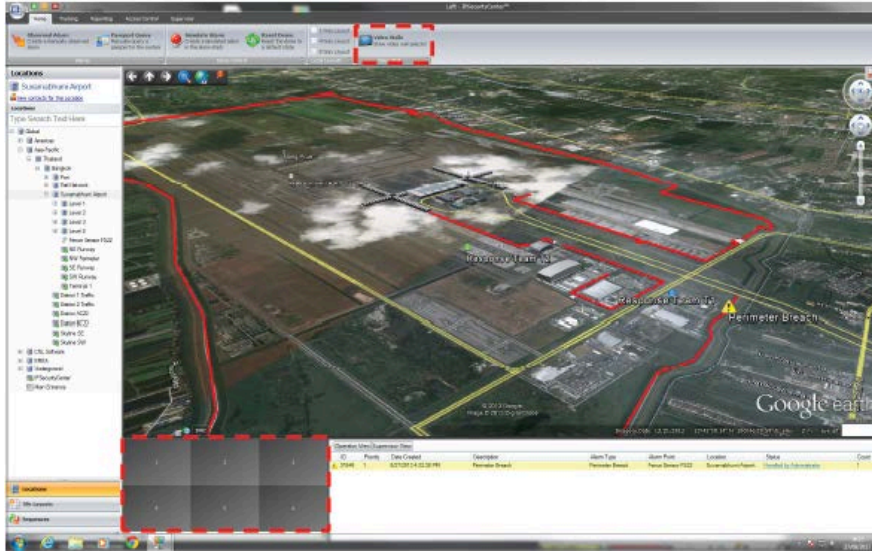


Fig 1
Video Wall Selector and Video Wall “drop zone” in an airport perimeter application example

The design of the integration allows for four levels of addressing real estate on the Barco video wall: CMS Server as the highest level and then 3 sub-levels:

- Display, which represents a single video wall which may have many display modules
- Display Module, which represents a single output in a display and will have a Tile Layout displayed in a grid configuration (a Tile Layout is analogous to the CMS Perspective feature)
- Cell Number, which represents a camera or CMS Source within a Tile Layout

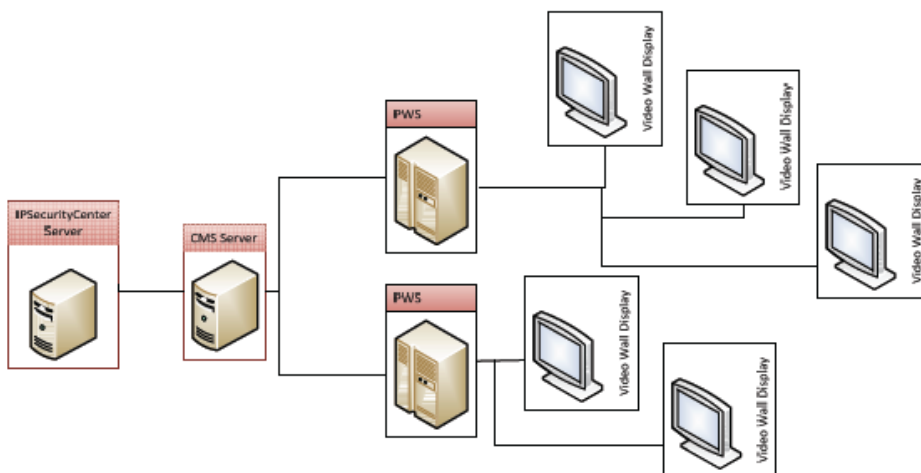


Fig 2
Different levels of addressing real estate within CNL IPSecurityCenter on the Barco video wall

Please note that currently for decoding of IP streams it is assumed that the IPSecurityCenter application runs natively on the Barco controller, for instance PWS or Transform N SD. The drag and drop zone supports specifically the legacy analog and DVI sources of the customer.

Architecture

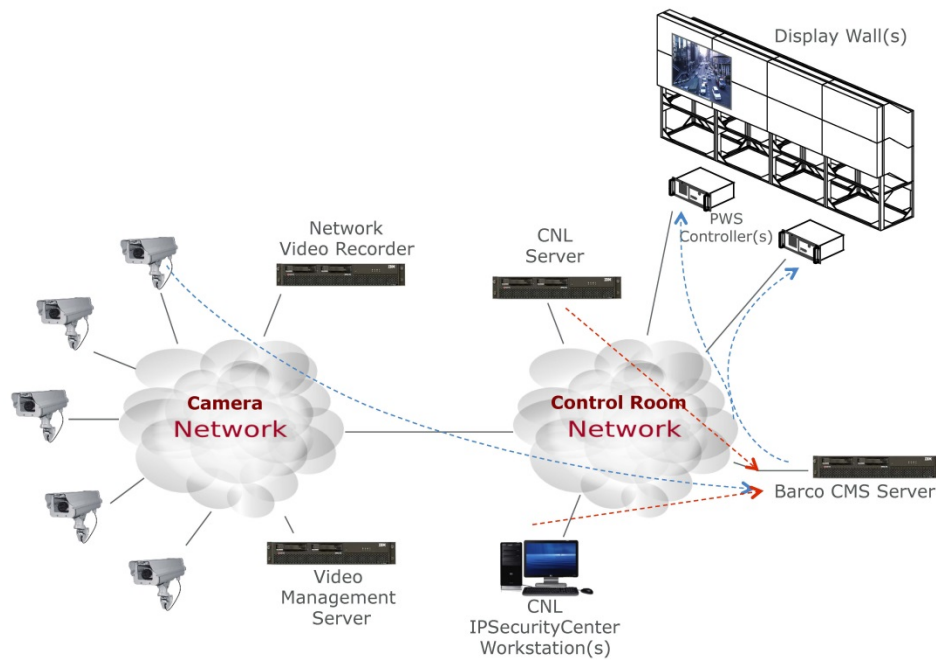


Fig 3

IP Source streaming

This is purely managed within the CNL IPSecurityCenter application running natively on the Barco controller.

Analog Source insertion

Through camera or PC selection in the CNL IPSecurityCenter “drop zone”, the CNL server manages the matrix switch to switch the right analog source towards the right input of the Barco controller.

Display Management Control

Through grid selection in the CNL IPSecurityCenter Workstation, the CNL server requests the CMS server to load the requested perspective on the Barco wall (aka Tiling).

Solution requirements

- CNL IPSecurityCenter Version 4.7 or above and Barco CMS Driver package `cnl_ipsc_barco_barcocmsserver_[BUILD-VERSION].ipsc`
- Barco Transform N with CMS 3.0.1
- For Barco customers using other Barco hardware and/or software, please contact Barco
- For CNL customers currently a different version of IPSecurityCenter or using other Barco hardware and/or software, please contact CNL
- IP Camera's and/or encoders to be supported by both CNL and Barco, please contact Barco and CNL for their interoperability lists or forward plans
- Please always contact Barco and CNL for needs analysis and documented quotations

Request more information

- **Jon Lunnerfeldt**- Product Manager, CNL, jon.lunnerfeldt@cnlsoftware.com
- **Tyler McDonald**- Strategic Alliances Manager, Barco, alliances@barco.com

About the Barco Strategic Alliances program

Great products need great focus. That is why Barco allies with other top players in their fields of expertise to build the best solutions available. By combining complementary strengths, we can optimize the integration of the systems and offer one single system

to the customer. This simplifies deployment, optimizes efficiency, minimizes reaction time, and reduces costs in a variety of selected professional markets. This creates a win/win situation for all parties involved, our customers in the first place.

More information? Please visit our dedicated webpage www.barco.com/alliances