

# Insights Management Suite

Cloud-based platform to monitor, diagnose and control your projectors



## Get the most out of your projector while saving time & money!

The Barco Insights Management Suite dashboard enables us to get a quick snapshot of the usage on the entire fleet. This will save us money in the long run and give our teams the chance to spend their time on more important tasks.

Craig Lawrence  
Video & Projects Director, SFL Group

### Insights - anywhere, anytime

This **IoT solution** is Barco's cloud-based connection platform facilitating stress-free administration and remote serviceability. The Management Suite dashboard enables **real-time operating info** and **remote log file access** for faster and more effective problem diagnosis.

### Full flexibility at the basis of projection solution

You can access the Insights Management Suite on **any device** with internet access, whether it's your laptop, mobile phone or tablet. For projectors with the integrated cellular module, the set-up time is minimized as there's no need for cables, extra networks or gateways. And the Management Suite data can also easily be combined with your own tools and processes.

### A safe platform for worry-free projector management

The state-of-the-art **security** ensures complete control and data protection. Be safe thanks to the **encrypted communication** and turn off connectivity at any moment in the device settings.

**BARCO**

# The Insights Management Suite subscription model

Barco's Insights Management Suite is based on a subscription model with three levels: **Monitor, Diagnose, Control**.

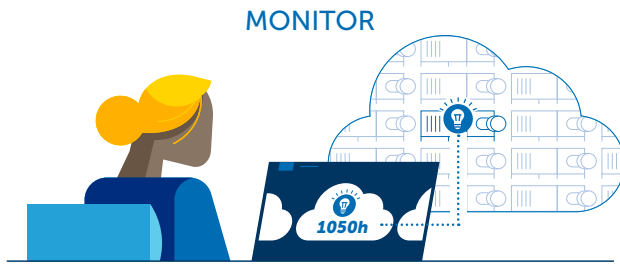
The Monitor offering is automatically embedded after registration for the first 2 years of usage\*. You can extend and upgrade your subscription whenever you want to benefit from the extra functionalities.

\* Some options are not available in all countries or projector models. Check with your Barco representative for more info.

	Monitor	Diagnose	Control
Projector & light source runtime	Two week history	Unlimited history	Unlimited history
Ambient temperature & humidity information	Two week history	Unlimited history	Unlimited history
Custom notes	✓	✓	✓
Set Flex <sup>2</sup> brightness value <sup>[1]</sup>	✓	✓	✓
Projector firmware version	✓	✓	✓
Projector connection status	✓	✓	✓
View current health issues		✓	✓
View history of health issue		✓	✓
Trigger & download diagnostics package		✓	✓
Receive health notifications via e-mail			✓
Manage projector power schedule			✓
Access cloud data through API			✓

[1] For projectors with a Flex brightness license

## Barco's Insights Management Suite in practice

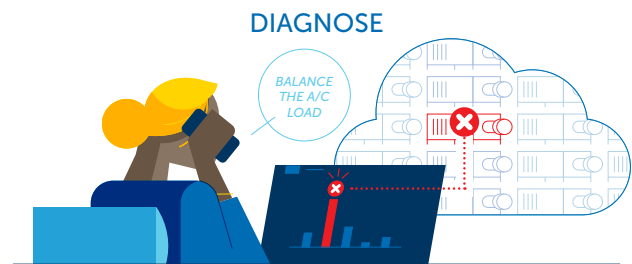


### Monitor

The Monitor package allows you to get rid of time-consuming and error-prone manual administration thanks to the automatic cloud-based storage of projectors' usage data and their light-source run-times. Its live dashboard gives real-time information on the operating and environmental conditions of the projectors allowing you to manage and control all your projectors in the most efficient way. With the Flex<sup>2</sup> setting you can tune and lock your brightness value in the cloud at any time.

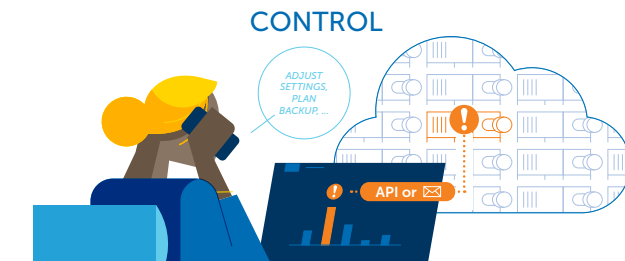
### Diagnose

Stop losing precious time with endless back-and-forth communication to diagnose the most straightforward issues. Diagnose allows you to consult the health history of your projector with mentions of past error notifications for easier and more accurate device analysis. So instead of last-minute physical service interventions, you have all the tools for more effective and prompt remote assistance to fix the issue.



### Control

Diagnose and solve issues before they turn into failures thanks to the e-mail warning notifications. You can schedule maintenance visits proactively before the projector even gets a chance to break down. It allows you to build a strong relationship with your customers based on reliability. Control cloud data can be received through an API for integration in other own software packages.



© 2023 Barco NV. All rights reserved. Reproduction in whole or in part without written permission is prohibited. All brand names and product names are trademarks, registered trademarks or tradenames of their respective holders. Due to continued innovation, information and technical specifications are subject to change without prior notice. Please check [www.barco.com](http://www.barco.com) for the latest specifications.

M00923-R04-0123-LF January 2023

Barco nv | [www.barco.com/projector-management-suite](http://www.barco.com/projector-management-suite)  
Beneluxpark 21 | 8500 Kortrijk | Belgium  
T +32 56 36 89 70 | F +32 56 36 83 86

ENABLING BRIGHT OUTCOMES

**BARCO**